



INDOFINE Chemical Company, Inc.

121 Stryker Lane, Bldg. 30, Suite 1 • Hillsborough, NJ 08844 • U.S.A.

Phone: (908) 359-6778 • FAX: (908) 359-1179

website: www.indofinechemical.com

e-mail: chemical@indofinechemical.com

CERTIFICATE OF ANALYSIS

Catalog Number: 027309

Product Name: **ROTTLERIN**
(Mallotoxin)

CAS Number: [82-08-6]

Lot Number: 2106562

Chemical Formula: $C_{30}H_{28}O_8$

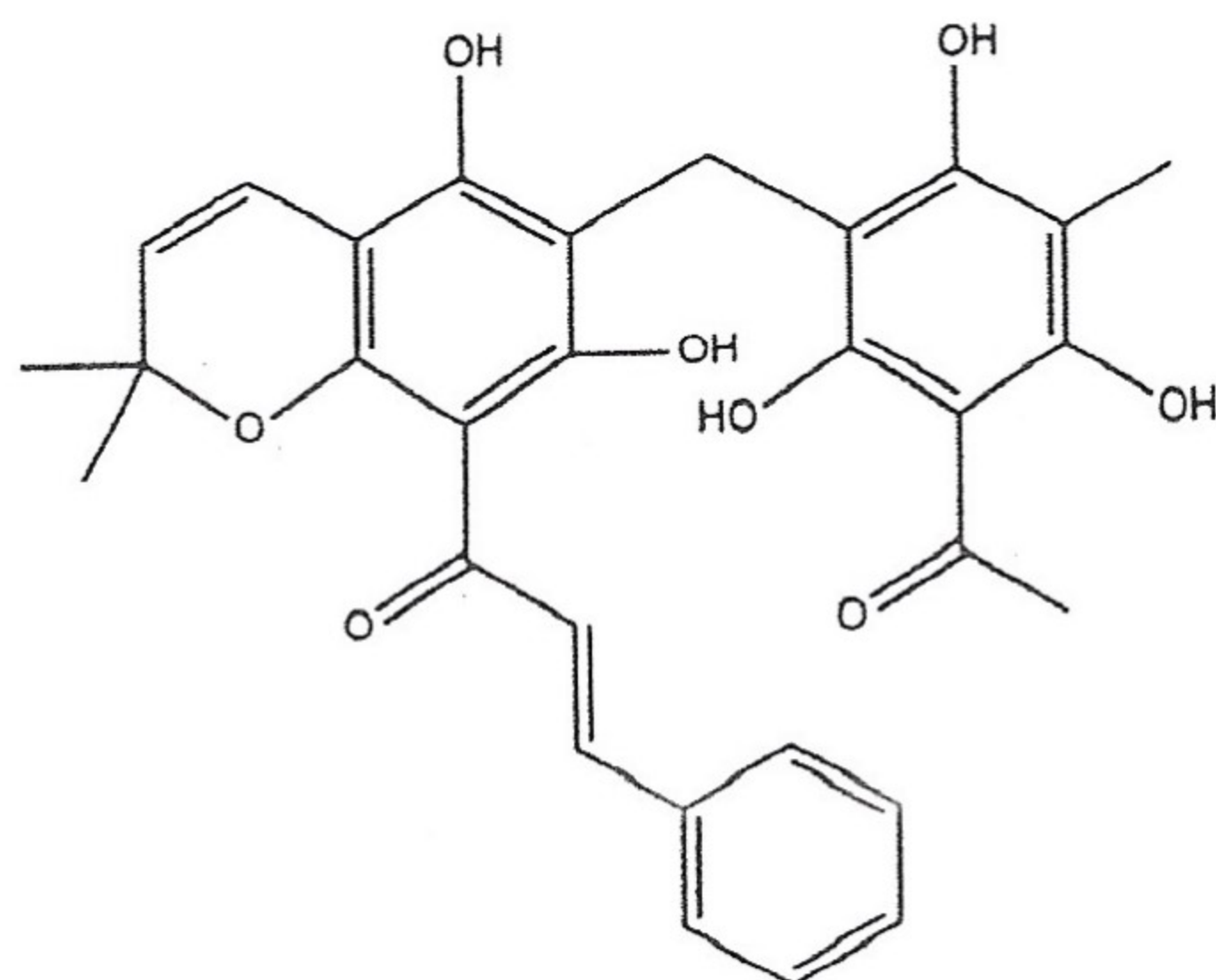
Molecular Weight: 516.5

Appearance: Orange red crystal

Solubility: DMSO, Ethanol

Storage: Store cold. Keep away from strong light & heat.

Purity(HPLC): 98.30%



Prepared by:
Ramesh Mandadi
Ramesh Mandadi
Director of Operations

Reviewed and Approved by:
Sujata Moton
Sujata Moton
VP



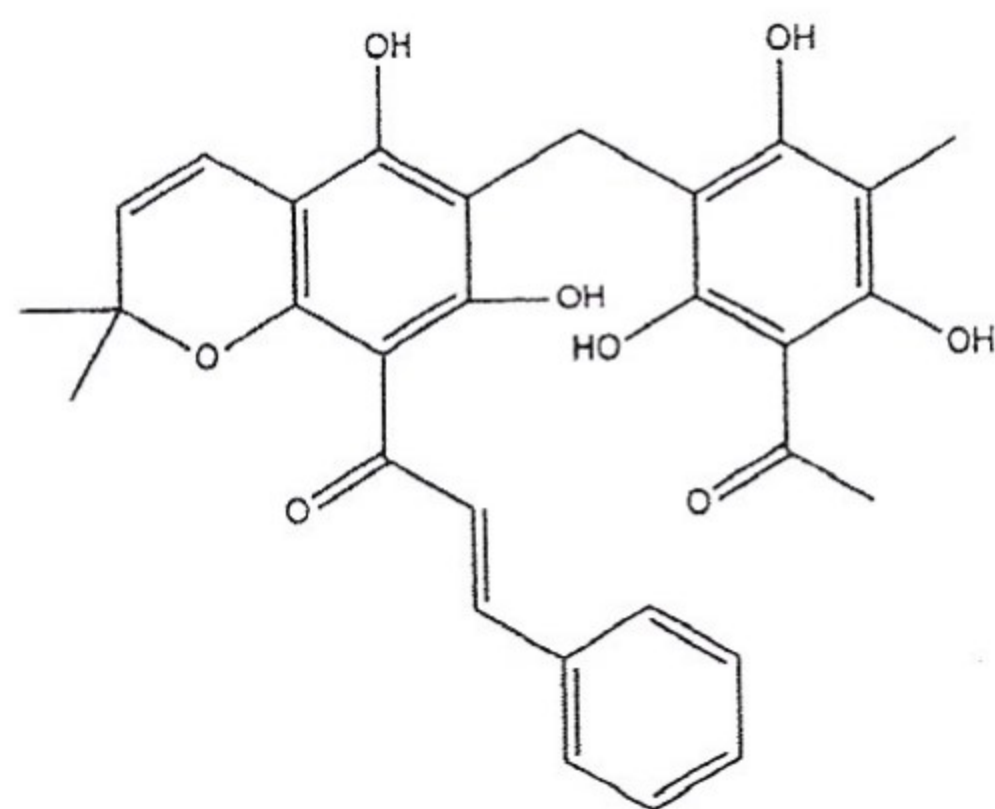
INDOFINE Chemical Company, Inc.

121 Stryker Lane, Bldg. 30, Suite 1 • Hillsborough, NJ 08844 • U.S.A.

Phone: (908) 359-6778 • FAX: (908) 359-1179

website: www.indofinechemical.com

e-mail: chemical@indofinechemical.com



HPLC ANALYSIS

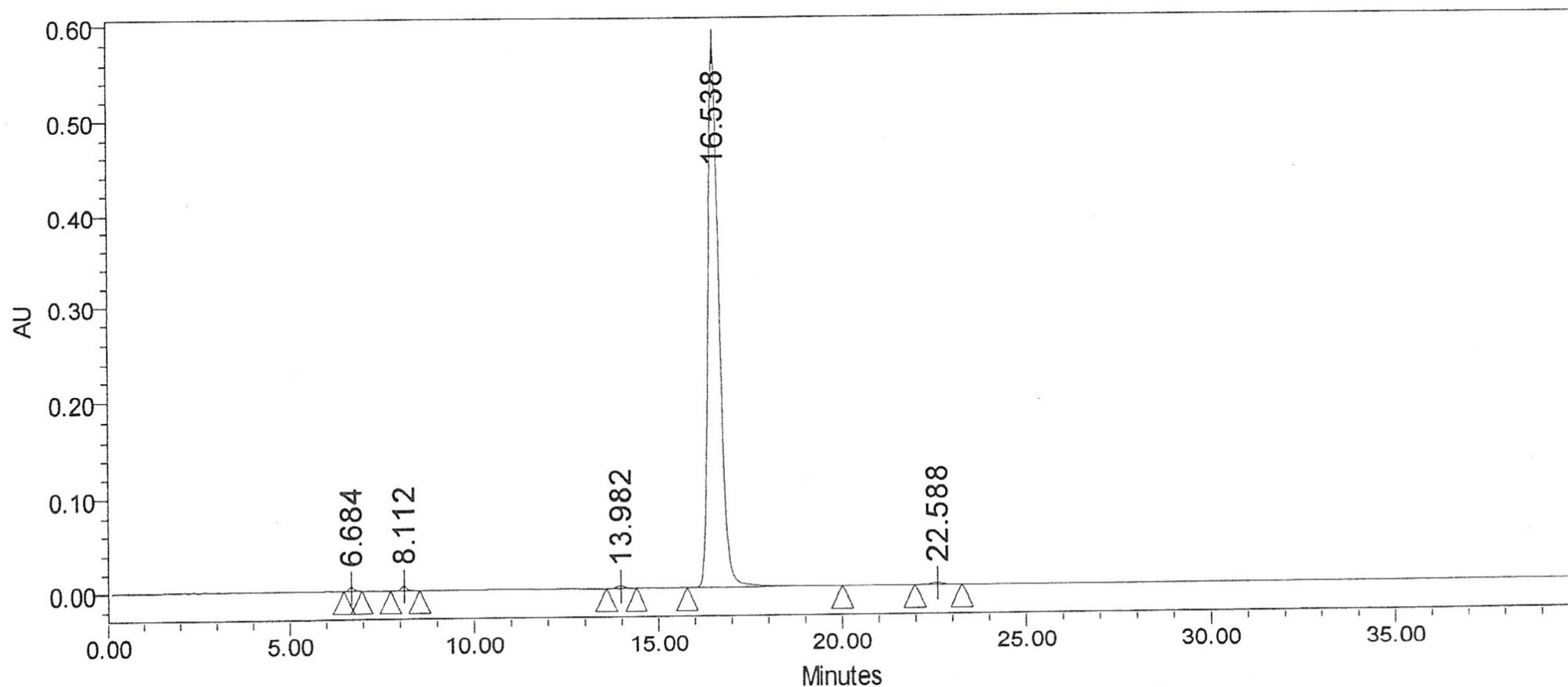
Catalog No.: 027309
Product Name: Rottlerin
Lot No.: 2106562

SAMPLE INFORMATION

Sample Name: Rottlerin
Sample Type: Unknown
Vial: 13
Injection #: 1
Injection Volume: 10.00 ul
Run Time: 40.0 Minutes

Acquired By: System
Sample Set Name:
Acq. Method Set: Rottlerin
Processing Method: Rottlerin
Channel Name: 290.0nm
Proc. Chnl. Descr.: PDA290.0 nm

Auto-Scaled Chromatogram



Peak Results

Name	RT	Area	Height	% Area
1	6.684	41601	4644	0.34
2	8.112	55774	5537	0.45
3	13.982	42481	2579	0.34
4	16.538	12195119	576832	98.30
5	22.588	70778	2691	0.57

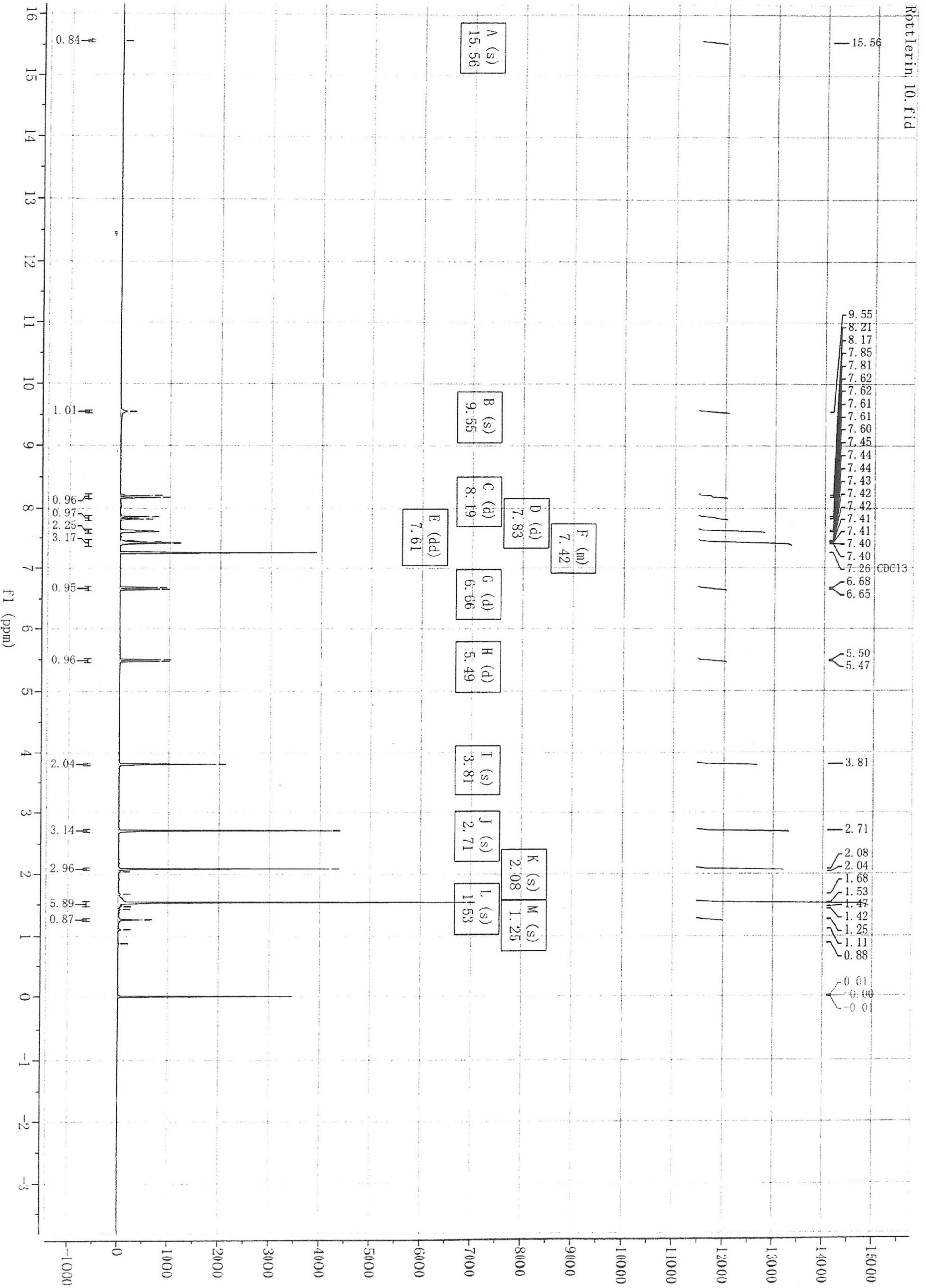
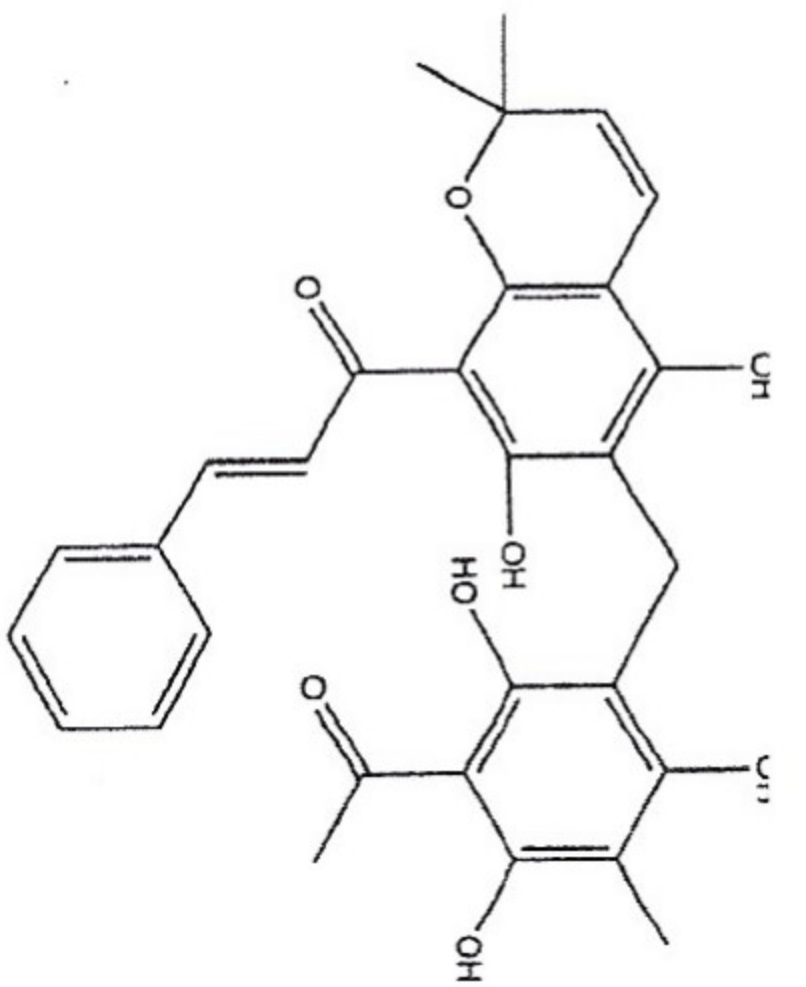
Mobile phase A: Acetonitrile 90
Mobile phase B: 0.03% H₃PO₄ Water 10
Flow rate: 1.0 ml/min
Column temp: 30°
Chromatographic column: Kromasil C18 250*4.6 5um

Prepared by:
Ramesh Mandadi
Ramesh Mandadi
Director of Operations

Reviewed and Approved by:
Sujata Moton
Sujata Moton
VP



INDOFINE Chemical Company, Inc.
121 STRYKER LANE
BLDG. 30, SUITE 1
HILLSBOROUGH, NJ 08844



Catalog No.: 027309
Product Name: Rottlerin
Lot No.: 2106562